

22831 SW Forest Creek Sherwood, OR

2 OFFICE SUITES FOR LEASE



Mike Morris, Broker
Direct: 971-241-3847
Mike@MillerConsultingGroup.net

Mary Martin Miller, CCIM
Owner/Principal Broker
Direct: 503-740-9200
Mary@MillerConsultingGroup.net

Licensed in the State of Oregon

- 2 Suites- Triple Net Lease at \$1.50 per square foot per month
- Suite B- 1174 sq. ft
- Suite D- 1211 sq. ft
- Lots of natural lighting
- Zoned OC- PUD

Square footage approximate, buyer to verify
Shown by appointment, do not disturb tenant
Contact Listing Agent for Complete Package



MILLER CONSULTING GROUP, LLC
COMMERCIAL AND INVESTMENT REAL ESTATE SERVICES

Mike Morris, Broker
Direct: 971-241-3847
Mike@MillerConsultingGroup.net

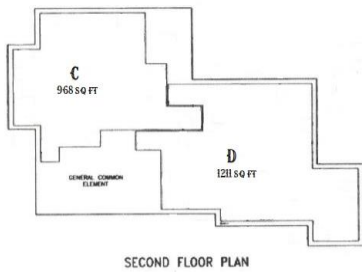
Mary Martin Miller, CCIM
Owner/Principal Broker
Direct: 503-740-9200
Mary@MillerConsultingGroup.net



MILLER CONSULTING GROUP, LLC

COMMERCIAL AND INVESTMENT REAL ESTATE SERVICES

Information contained herein has been obtained from the owner of the property or other sources that are deemed to be reliable. There is no reason to doubt the accuracy, but it is not guaranteed.



These very nice and well maintained office suites are in a great Sherwood location. Priced well and just off highway 99W they are the perfect fit for an office space. Both suites have great natural lighting and common ADA restrooms on each floor. The building is serviced by an elevator. Must have appointment for showing and listing agent must be present.

Mike Morris, Broker
 Direct: 971-241-3847
Mike@MillerConsultingGroup.net

Mary Martin Miller, CCIM
 Owner/Principal Broker
 Direct: 503-740-9200
 Email: mary@millerconsultinggroup.net

Licensed in the State of Oregon



MILLER CONSULTING GROUP, LLC
 COMMERCIAL AND INVESTMENT REAL ESTATE SERVICES

Information contained herein has been obtained from the owner of the property or other sources that are deemed to be reliable. There is no reason to doubt the accuracy, but it is not guaranteed.