

22831 SW Forest Creek Drive Sherwood, OR **OFFICE SUITE FOR LEASE**



Mike Morris, Broker
Direct: 971-241-3847
Mike@MillerConsultingGroup.net

Mary Martin Miller, CCIM
Owner/Principal Broker
Direct: 503-740-9200
Mary@MillerConsultingGroup.net

Licensed in the State of Oregon

- Triple Net Lease at \$1.50 per square foot per month
- Suite D - 1,121 square feet
- Lots of natural lighting
- Zoned OC- PUD

Square footage approximate, tenant to verify
Shown by appointment, do not disturb tenant
Contact Listing Agent for Complete Package



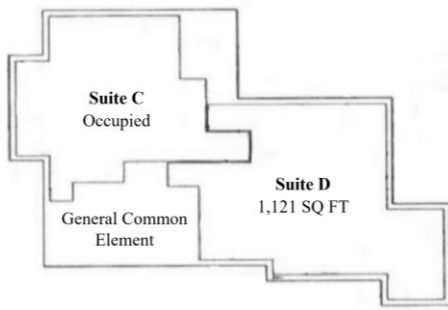
MILLER CONSULTING GROUP, LLC

COMMERCIAL & INVESTMENT REAL ESTATE SERVICES

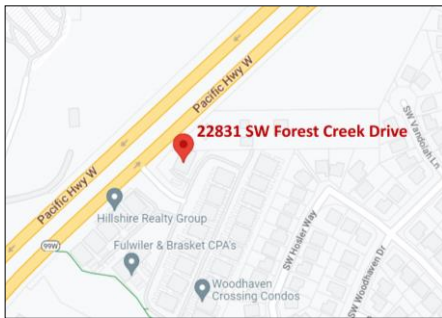


MILLER CONSULTING GROUP, LLC

COMMERCIAL & INVESTMENT REAL ESTATE SERVICES



Second Floor Plan



Very nice and well-maintained property in great location and priced right. Hard to find smaller space right on 99W in Sherwood. Suite D is 1,121 SF. Features great natural lighting. Common ADA restrooms on both floors. The building is serviced by an elevator. Must have appointment for showing and listing agent must be present.

Mike Morris, Broker
 Direct: 971-241-3847
Mike@MillerConsultingGroup.net

Mary Martin Miller, CCIM
 Owner/Principal Broker
 Direct: 503-740-9200
 Email: mary@millerconsultinggroup.net

Licensed in the State of Oregon



MILLER CONSULTING GROUP, LLC

COMMERCIAL & INVESTMENT REAL ESTATE SERVICES

Information contained herein has been obtained from the owner of the property or other sources that are deemed to be reliable. There is no reason to doubt the accuracy, but it is not guaranteed.